



Republic of the Philippines
Department of Education
REGION IX – ZAMBOANGA PENINSULA
SCHOOLS DIVISION OF ZAMBOANGA SIBUGAY

DepEd, Division of Zamboanga Sibugay	
RECORD SECTION	
NO: 533879	TIME: 5:07 PM
BY: _____	DATE: Dec 05 2025
RELEASED	

05 December 5, 2025

DIVISION MEMORANDUM

No. 652, s. 2025

**POLICY ON THE ADMINISTRATION OF LANGUAGE ENHANCEMENT
THROUGH READING ASSESSMENT (LETRA) FOR GRADES, 10, 11, AND 12
STUDENTS**

TO: Assistant Schools Division Superintendent
Public Schools District Supervisors/ District-in-Charge
School Head of Secondary Schools (SHS)
This Division

1. This Division through the Curriculum Implementation Division (CID) announces the conduct of the administration of Language Enhancement Through Reading Assessment (LETRA) to all Grade 10 and Senior High School (SHS) students.
2. The objective of the LETRA is to expose Grades 10 to 12 students to **informational, academic, and transactional** texts for appropriate intervention and enhancement activities.
3. The administration of LETRA results follows the conceptual reference flowchart. See Annex A. LETRA Reference Flowchart and Annex B. Guidelines on the Administration of LETRA.
4. There are separate tools for **English and Filipino**. The pretest shall be conducted within the first or second month of the SY while post-test shall be administered at least within a month or two before the EOSY.
5. The LETRA Tools for JHS and SHS English and Filipino can be downloaded through this link: <https://link.ro9-deped.com/ROIXReadingTools2024>.
6. All reading coordinators shall document the learners Reading Progress for tracking and monitoring purposes.
7. Each language teacher must prepare an intervention plan to provide targeted support to learners tailored on their individual needs and strengthen their reading skills progressively. Intervention plan shall be disseminated on separate link.

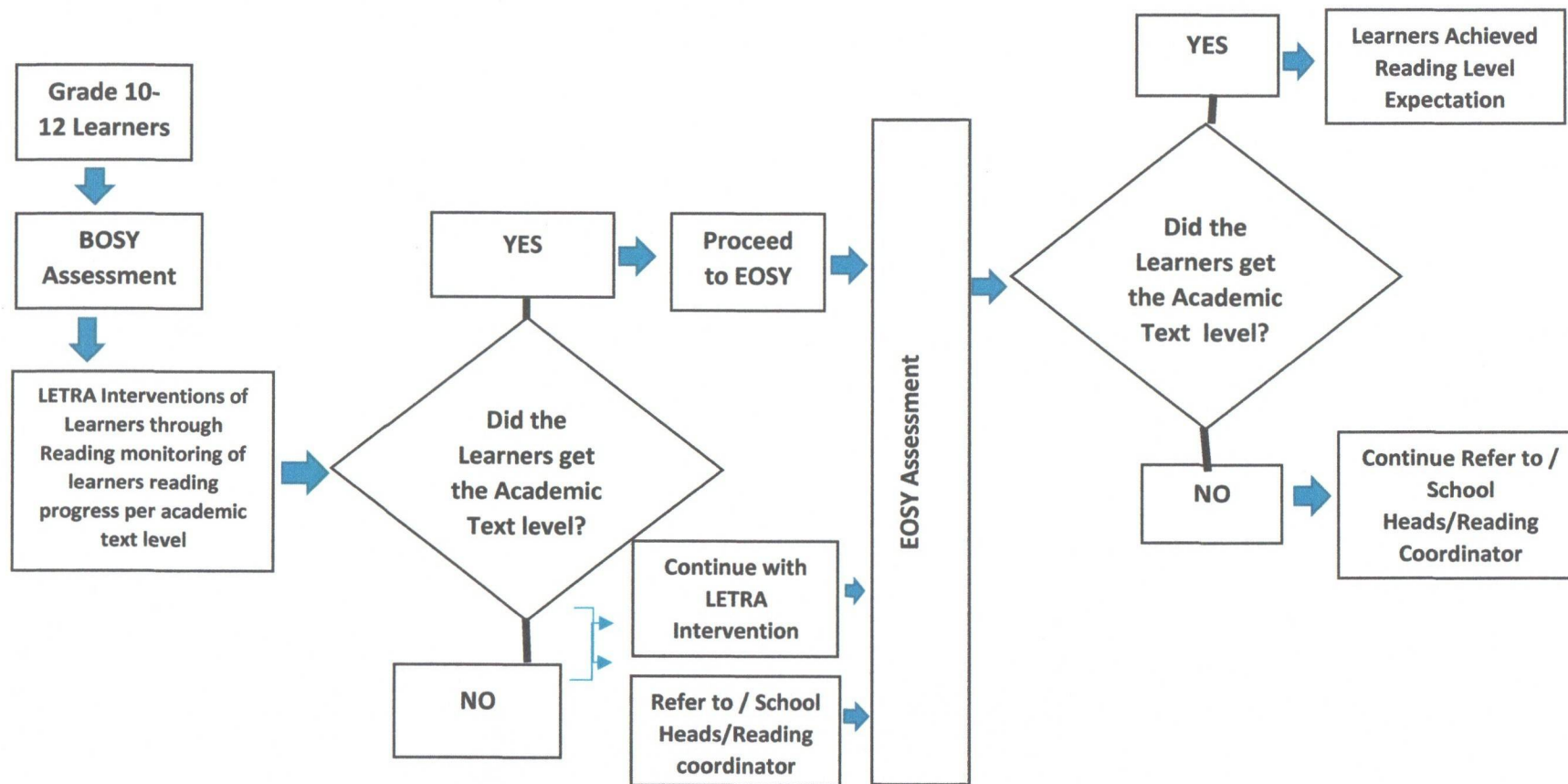


📍 Pangi, Ipil, Zamboanga Sibugay, 7001
☎ 0968-520-9123
✉ zamboanga.sibugay@deped.gov.ph
🌐 depedzamboangasibugay.ph
📘 DepEd Tayo Zamboanga Sibugay Division



Republic of the Philippines
Department of Education
REGION IX – ZAMBOANGA PENINSULA
SCHOOLS DIVISION OF ZAMBOANGA SIBUGAY

Annex A. LETRA Reference Flowchart





Republic of the Philippines
Department of Education
REGION IX – ZAMBOANGA PENINSULA
SCHOOLS DIVISION OF ZAMBOANGA SIBUGAY

8. For widest and immediate dissemination.

VIRGILIO P. BATAN JR., CESO V
Schools Division Superintendent

For the school's division Superintendent


OLIVER B. TALAO

Chief, SGOD
In-charge of office

Reference:

Republic Act (RA) No. 12028

DepEd memo. No.56, s. 2025

DepEd Order No. 18 s. 2025

Encl.: As Stated

Reference:

To be indicated in the Perpetual Index






under the following subjects:

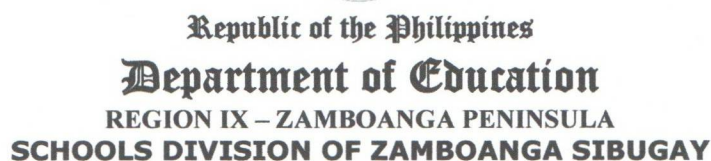
LEARNERS PROGRAMS PROJECTS
READING EDUCATION SCHOOLS

ZS-DM-CID-2025-11-162

RGV20251112



 Pangi, Ipil, Zamboanga Sibugay, 7001
 0968-520-9123
 zamboanga.sibugay@deped.gov.ph
 depedzamboangasibugay.ph
 DepEd Tayo Zamboanga Sibugay Division



Guidelines on the Administration of LETRA.

- Phil-IRI for JHS Form 1B**

Grade Level _____ Section _____

Screening Test Level: _____ Date: _____

Screening Test Level: _____ Date: _____

[illegible]



Republic of the Philippines
Department of Education
 REGION IX – ZAMBOANGA PENINSULA
SCHOOLS DIVISION OF ZAMBOANGA SIBUGAY

Phil-IRI for JHS Form 2

**Talaan ng Paaralan sa Pagbasa (TPP)
 School Reading Profile (SRP)**

School: _____ Division _____
 District: _____ Region _____
 Enrolment: _____

English

Grade Level	Sections	Number of Learners							
		Score 0-15		Score 16-27		Total	Score 28-40		Total
		Male	Female	Male	Female		Male	Female	
7									
8									
9									

2. Learners who passed the GST will be reported at the independent level if their LETRA results fall between levels 6 and 9. However, if a learner passes the GST but has a LETRA results below level 6, they must be reported at the instructional level. However, learners who do not pass the GST (scoring 27 or below for JHS) will be reported as either at the instructional or frustration level. Please refer to the interpretation provided below;

Connecting PHIL IRI LEVELS TO LETRA on interpreting results

Number	Level	Qualitative Description	Quantitative Description	Phil IRI Level
Level 0	Below word level	Unable to read words correctly	All levels	Frustration
Level 1	Word level	Able to read words with ease	Grade 7 At least 10 words	Frustration



Republic of the Philippines
Department of Education
 REGION IX – ZAMBOANGA PENINSULA
SCHOOLS DIVISION OF ZAMBOANGA SIBUGAY

			correctly out of 20 words Grade 8 At least 12 words out of 20 words Grade 9 14 words out of 20 Grade 10 16 words correctly out of 20 words	
Level 2	Sentence level	Able to read sentences correctly with proper phrasing expression and pacing	Grade 7 3 sentences correctly out of 4 sentences Grade 8 4 sentences correctly out of 5 sentences Grade 9 5 sentences correctly out of 7 sentences Grade 10 6 sentences correctly out of 7 sentences	Frustration
Level 3	Paragraph level	Able to read paragraph correctly with proper phrasing, expression and pacing	Grade 7 With 120-150 words per minute with no more than 3 mistakes Grade 8 120 to 150 words per	Frustration



Republic of the Philippines
Department of Education
 REGION IX – ZAMBOANGA PENINSULA
SCHOOLS DIVISION OF ZAMBOANGA SIBUGAY

			minute with no more than 3 mistakes Grade 9 150 to 190 words per minutes with no more than 3 mistakes Grade 10 with 179 to 204 words per minute with no more than 3 minutes	
Level 4	Story level (Literary and Cultural(local and Asian))	Able to read a story	Grade 7 With no more than 3 mistakes Grade 8 With no more than 3 mistakes Grade 9 With no more than 3 mistakes Grade 10 With no more than 3 mistakes	Instructional
Level 5	Story level + comprehension	Able to read a story with comprehension	Grade 7 Respond correctly to 6 out of 7 questions Grade 8 Respond correctly to 6 out of 7 questions Grade 9	Instructional



Republic of the Philippines
Department of Education
 REGION IX – ZAMBOANGA PENINSULA
SCHOOLS DIVISION OF ZAMBOANGA SIBUGAY

			Respond correctly to 8 out of 9 questions Grades 10 Respond correctly to 8 out of 9 questions	
Level 6	Local Material level	Able to read a local material	Grade 7 With no more than 3 mistakes Grade 8 With no more than 3 mistakes Grade 9 With no more than 3 mistakes Grade 10 With no more than 3 mistakes	Independent
Level 7	Local Material level + comprehension	Able to read local material with Comprehension	Grade 7 Respond correctly to 6 out of 7 questions Grade 8 Respond correctly 6 out of 7 questions Grade 9 Responds correctly 8 out of 9 questions Grade 10	Independent



Republic of the Philippines
Department of Education
 REGION IX – ZAMBOANGA PENINSULA
SCHOOLS DIVISION OF ZAMBOANGA SIBUGAY

			Respond correctly 8 out of 9 questions	
Level 8	Academic Text level(with limited graphical displays of information)	Able to read an academic text	Grade 7 With no more than 4 mistakes Grade 8 With no more than 4 mistakes Grade 9 with no more than 4 mistakes Grade 10 With no more than 4 mistakes	Independent
Level 9	Academic text level + Comprehension	Able to interpret, infer graphical display of information and respond accurately to questions	Grades 7 Respond correctly to 6 out of 7 questions Grade 8 Respond correctly to 6 out of 7 questions Grade 9 Respond correctly 8 out of 9 questions Grade 10 Respond correctly to 8 out of 9 questions	Independent



Republic of the Philippines
Department of Education
 REGION IX – ZAMBOANGA PENINSULA
SCHOOLS DIVISION OF ZAMBOANGA SIBUGAY

			Respond correctly 8 out of 9 questions	
Level 8	Academic Text level(with limited graphical displays of information)	Able to read an academic text	Grade 7 With no more than 4 mistakes Grade 8 With no more than 4 mistakes Grade 9 with no more than 4 mistakes Grade 10 With no more than 4 mistakes	Independent
Level 9	Academic text level + Comprehension	Able to interpret, infer graphical display of information and respond accurately to questions	Grades 7 Respond correctly to 6 out of 7 questions Grade 8 Respond correctly to 6 out of 7 questions Grade 9 Respond correctly 8 out of 9 questions Grade 10 Respond correctly to 8 out of 9 questions	Independent